

RESEARCH ARTICLE

Open Access

Genetic diversity and striatal gene networks: focus on the heterogeneous stock-collaborative cross (HS-CC) mouse

Ovidiu D Iancu^{1*}, Priscila Darakjian¹, Nicole AR Walter¹, Barry Malmanger¹, Denesa Oberbeck¹, John Belknap^{1,2}, Shannon McWeeney^{3,4}, Robert Hitzemann^{1,2}

Abstract

Background: The current study focused on the extent genetic diversity within a species (*Mus musculus*) affects gene co-expression network structure. To examine this issue, we have created a new mouse resource, a heterogeneous stock (HS) formed from the same eight inbred strains that have been used to create the collaborative cross (CC). The eight inbred strains capture > 90% of the genetic diversity available within the species. For contrast with the HS-CC, a C57BL/6J (B6) × DBA/2J (D2) F₂ intercross and the HS4, derived from crossing the B6, D2, BALB/cJ and LP/J strains, were used. Brain (striatum) gene expression data were obtained using the Illumina Mouse WG 6.1 array, and the data sets were interrogated using a weighted gene co-expression network analysis (WGCNA).

Results: Genes reliably detected as expressed were similar in all three data sets as was the variability of expression. As measured by the WGCNA, the modular structure of the transcriptome networks was also preserved both on the basis of module assignment and from the perspective of the topological overlap maps. Details of the HS-CC gene modules are provided; essentially identical results were obtained for the HS4 and F₂ modules. Gene ontology annotation of the modules revealed a significant overrepresentation in some modules for neuronal processes, e.g., central nervous system development. Integration with known protein-protein interactions data indicated significant enrichment among co-expressed genes. We also noted significant overlap with markers of central nervous system cell types (neurons, oligodendrocytes and astrocytes). Using the Allen Brain Atlas, we found evidence of spatial co-localization within the striatum for several modules. Finally, for some modules it was possible to detect an enrichment of transcription binding sites. The binding site for *Wt1*, which is associated with neurodegeneration, was the most significantly overrepresented.

Conclusions: Despite the marked differences in genetic diversity, the transcriptome structure was remarkably similar for the F₂, HS4 and HS-CC. These data suggest that it should be possible to integrate network data from simple and complex crosses. A careful examination of the HS-CC transcriptome revealed the expected structure for striatal gene expression. Importantly, we demonstrate the integration of anatomical and network expression data.

Background

Gene co-expression analyses have provided important insights into the functional organization of the transcriptome in several species, including yeast [1], mouse [2] and primates [3]. Co-expressed genes frequently code for interacting proteins, which in turn leads to new insights into protein function(s). Many co-expression

patterns are conserved across species, suggesting the patterns are under selection pressure and therefore functional; a variety of studies have confirmed this premise [3-7].

The current study focuses on the conservation of brain gene co-expression networks from the perspective of how marked differences in genetic diversity within a species (here *Mus musculus*) affect network structure. To examine this issue, we have created a new mouse resource, a heterogeneous stock (HS) formed from the same eight inbred strains that have been used to create the collaborative

* Correspondence: iancuo@ohsu.edu

¹Department of Behavioral Neuroscience, Oregon Health & Science University, Portland OR, USA

Full list of author information is available at the end of the article

cross (CC) [8]; hereafter this resource is referred to as the HS-CC. The eight inbred strains chosen as the CC founders were the following: C57BL/6J (B6), A/J (A), 129S1/SvImJ (129), NOD/LtJ (NOD), NZO/HILtJ (NZO), CAST/EiJ (CAST), PWK/PhJ (PWK) and WSB/EiJ (WSB). The choice of these strains was a balance between ensuring the greatest possible genetic diversity while at the same time including some strains (and their associated phenotypes) familiar to many biomedical scientists. Using single nucleotide polymorphisms (SNPs) as proxy for genetic diversity, these strains capture > 90% of the available genetic diversity within *Mus musculus* (see <http://www.sanger.ac.uk/modelorgs/mousegenomes/>). Capturing this degree of diversity is possible because of the inclusion of the three wild-derived strains: CAST (*Mus musculus castaneus*), PWK (*M.m. musculus*) and WSB (*M.m. domesticus*). To contrast with the HS-CC, we have chosen a B6×DBA/2J (D2) F₂ intercross and the HS4, derived from intercrossing the B6, D2, BALB/cJ and LP/J strains [9]. The HS4 and HS-CC were outbred using a similar circle breeding strategy, and both are maintained as 48 families per generation. From the SNP perspective, the HS-CC is ~6 times more diverse than the F₂ intercross and ~4 times more diverse than the HS4; the actual differences in genetic diversity will be somewhat less because of genetic drift associated with breeding the HS populations for multiple generations.

Gene expression data (Illumina WG 6.1 array) were obtained in the striatum, a relatively homogenous brain region composed largely of medium-spiny GABAergic neurons. The striatum has a key role in a wide variety of behaviours; the functions of the striatum are well understood; and a number of key striatal genes (e.g., *Drd1a* and *Drd2*) are known to have a highly variable expression [10]. The unbiased Weighted Gene Covariance Network Analysis (WGCNA) developed by Horvath and colleagues [11] was used to detect gene modules. This approach has been successfully used to analyze gene expression data related to brain cancer [12], the yeast cell cycle [1], mouse tissue [2,13], primate brain tissue [14], diabetes [15], chronic fatigue syndrome [16], plants [17] and amyotrophic lateral sclerosis [18].

The HS-CC data set was further characterized, emphasizing the fine spatial distribution of the gene modules. It has been suggested that groups of genes participating together in common biological functions may show a similar spatial pattern of expression [19]. The Allen Brain Atlas (ABA; <http://www.brain-map.org/>) [20] provides detailed information about the spatial distribution of thousands of genes throughout the mouse brain. For the purposes of the present study, it was possible to determine whether a particular gene is specific to the striatum and/or its subdivisions and whether its spatial distribution is uniform or clustered. In addition, the ABA interface allows

quantification of the spatial similarity of two expression patterns using the NeuroBlast algorithm [21,22]. These resources were used to investigate whether groups of co-expressed genes also show spatial co-localization.

Results

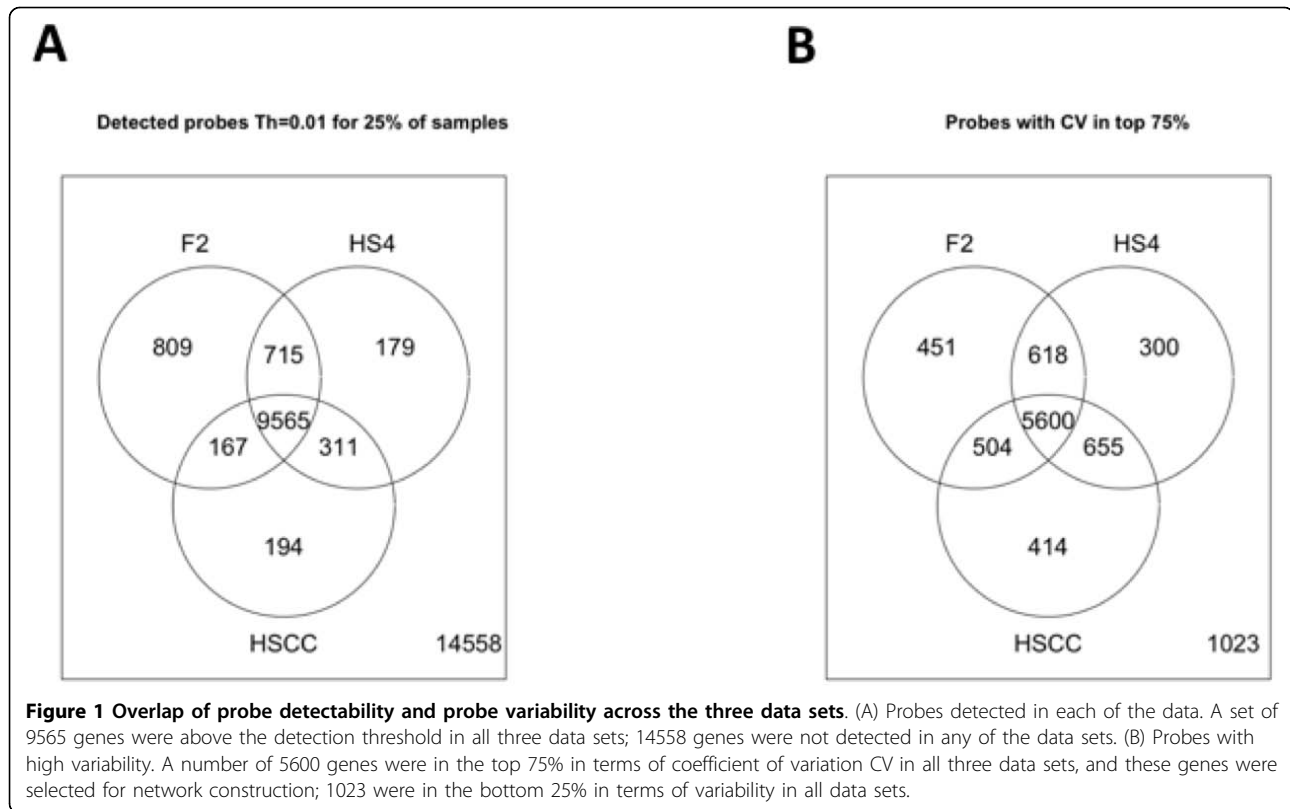
Detectable and variable genes are preserved across populations

The initial comparison of gene expression in the three mouse populations (F₂, HS4 and HS-CC) focused on what transcripts had a detectable expression. Not all microarray probes exhibit a detectable signal because a) the target gene is not expressed, b) the expression level is below what can be reliably measured, c) the probe performs poorly, producing a false negative or d) SNP(s) within the probe sequence impair hybridization [23,24]. The SNP effect is especially important when comparing genetically diverse populations. Therefore, we removed all probes overlapping with known SNPs, as outlined in Methods. Next, the Illumina gene expression analysis package “lumi” [25] was used to assess the probability of probe expression above background. A probe was deemed to have a significant expression if the probability of being part of the background (low) distribution was less than threshold $Th = 0.01$ in at least a quarter of the samples. This procedure was applied to each of the three experiments after outlier removal and normalization of the data (an outline of the data pre-processing steps is available in Methods; see also Additional File 1, Figure S1 and Additional File 1, Figure S2). As shown in Figure 1A, there was a significant overlap among the three data sets for the probes meeting the threshold criteria. A total of 14558 probes did not meet the criteria for above-threshold expression in any of the data sets.

The co-expression networks are constructed on the basis of the correlated variability across individuals. Expression variability was computed by determining the coefficient of variability (CV) for the set of 9565 commonly detected probes (Figure 1A); 1023 of the probes were in the bottom quartile for all three populations. Of the remaining probes, 5600 were in the top three quartiles in all populations, illustrating the conservation of the variance structure (Figure 1B).

Construction of gene co-expression networks

Gene co-expression networks were constructed for the three data sets following methods described previously [11]. Briefly, the power-transformed Pearson correlation coefficient between gene pairs was used to infer a measure of connection strength or topological overlap [26]. Subsequently, this measure of gene co-expression was used in an automated hierarchical clustering procedure [27], resulting in the identification of several distinct modules or groups of genes with similar expression



patterns. This series of steps was used to independently detect co-expression modules in each data set, identifying 16 distinct modules in HS-CC and 13 modules each in F₂ and HS4. Genes left unassigned to modules were denoted with the grey color. The exact number of gene modules in any network was not considered essential because the number of modules detected is highly dependent on the clustering procedure settings. The color assignment of the modules in the three different networks was arbitrary, and the same color assignment in different networks did not carry meaning, except for the unassigned genes (grey color). The genes associated with each of the modules in all three populations are listed in Additional File 2.

Comparisons of the HS-CC, F₂ and HS4 networks are illustrated in Figures 2 and 3. The data revealed that essentially all F₂ and HS4 modules had a counterpart in the HS-CC and vice versa (Fisher exact test), although some of the larger HS-CC modules fragmented into two or more F₂ or HS4 modules. An examination of the unassigned “grey” genes across the three networks revealed that their identity was largely preserved.

To further quantify the level of module preservation, a matrix comparison procedure was used. Each module was described by a topological overlap matrix (TOM) with entries quantifying the level of gene pair co-expression. The matrices were compared by computing the Mantel

matrix correlation [28] between the HS-CC modules and the same genes in the F₂ and HS4 networks. A high matrix correlation signifies that the pattern of pairwise topological overlap in two different data sets was similar. Statistical significance was evaluated by repeatedly ($N = 10^5$) shuffling the columns of one matrix and recomputing the correlation using the randomized matrix [29]. For the HS-CC and F₂ comparison, the matrix correlation values ranged from 0.22 (blue module) to 0.69 (purple module). The HS-CC to HS4 comparison yielded correlation values between 0.16 (salmon module) and 0.74 (purple module). All correlation values were significant at $p < 10^{-5}$ or better, except for salmon module ($p < 3 \times 10^{-3}$). Thus, the module structure was largely preserved. This congruence suggested that each module must have functionally conserved attributes; these attributes were investigated in the HS-CC.

Gene ontology (GO) annotation of the HS-CC modules

GO annotation [30] was used to determine if the modules had unique functional properties and/or were associated with distinct subcellular compartments (see e.g., [13]). For example, the pink module was enriched for GO biological processes that included the following: central nervous system development (Bonferroni corrected $p < 8.6 \times 10^{-3}$), regulation of neurotransmitter levels (Bonferroni corrected $p < 8.9 \times 10^{-3}$), regulation of timing of neuron differentiation (Bonferroni corrected

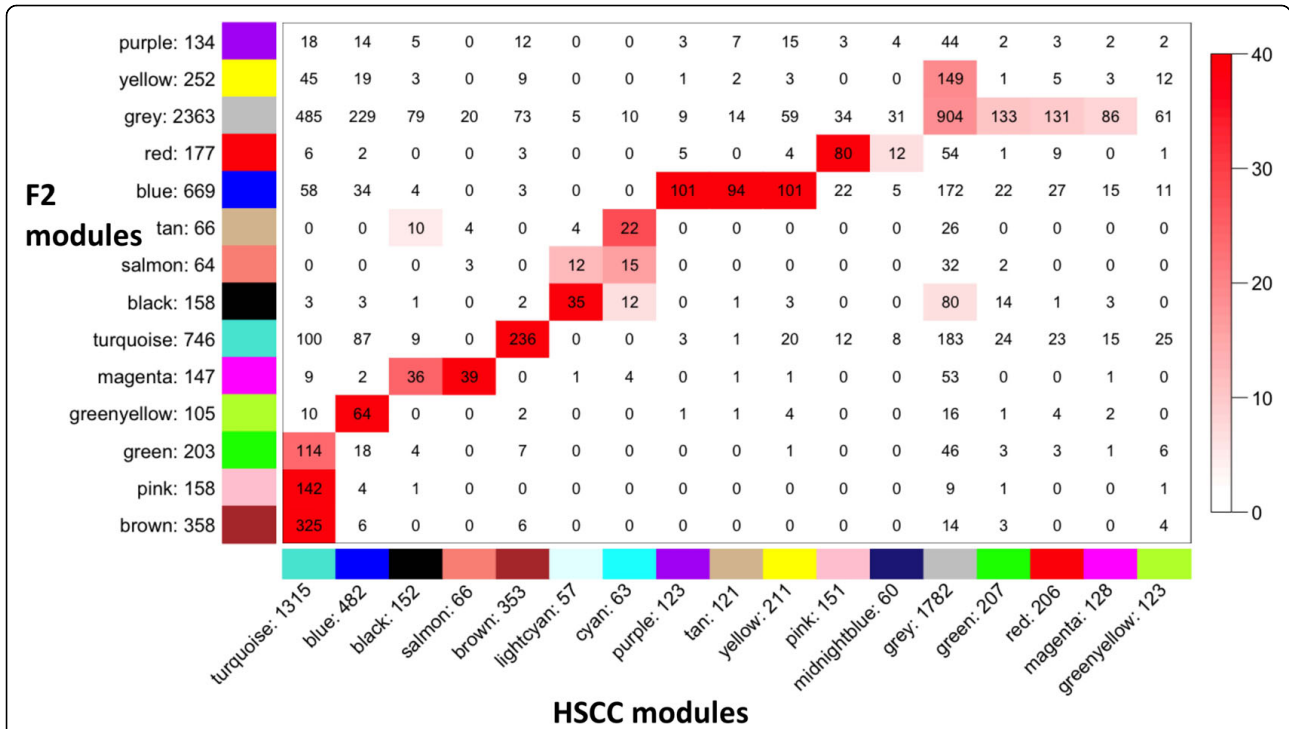


Figure 2 Overlap of F₂ and HS-CC module membership. The numbers on the axes denote the number of genes in each module. The number in the box denotes the intersection size. The colour legend is proportional to $-\log(p)$ probability of chance overlap of same size or higher.

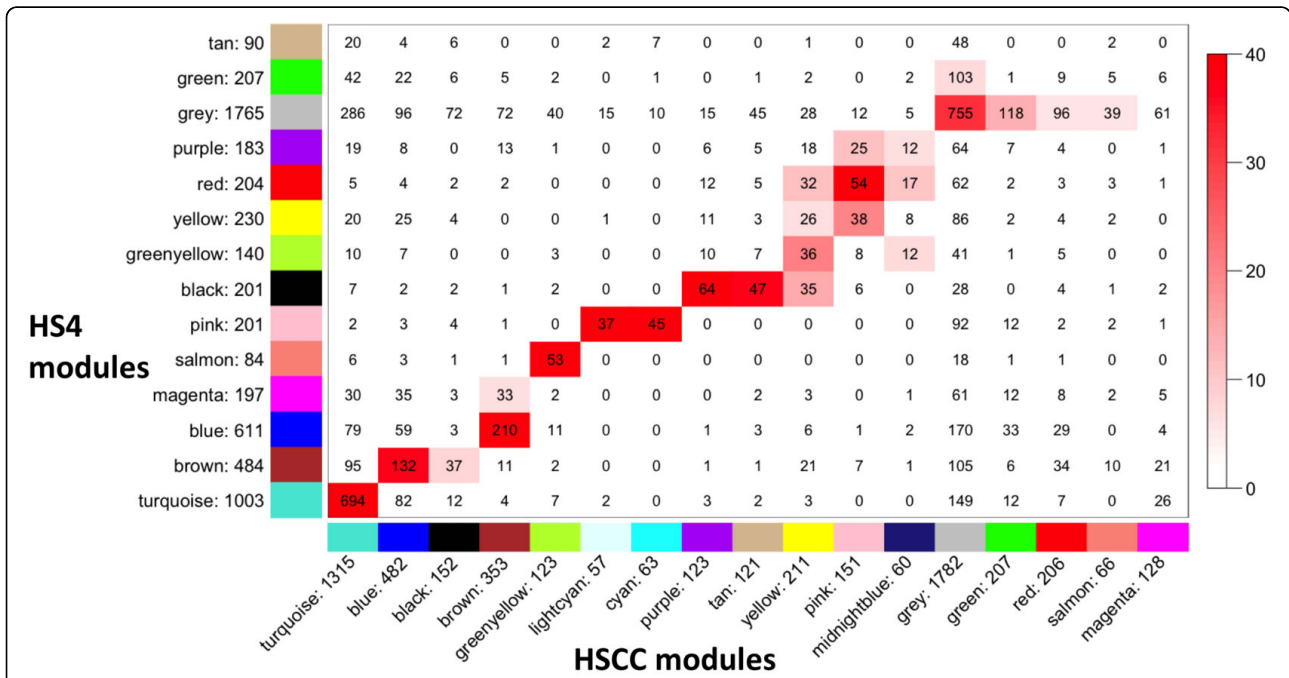


Figure 3 Overlap of HS4 and HS-CC module membership. Figure details as in Figure 2.

$p < 0.016$), neuron development (Bonferroni corrected $p < 0.036$) and forebrain development (Bonferroni corrected $p < 0.043$). The red module was significantly enriched in genes corresponding to GO category behavioural fear response (Bonferroni corrected $p < 0.0024$); the tan module was enriched with genes associated with ensheathment of neurons (Bonferroni corrected $p < 1.4 \times 10^{-4}$), regulation of action potential (Bonferroni corrected $p < 1.4 \times 10^{-3}$), myelination (Bonferroni corrected $p < 1.9 \times 10^{-2}$), oligodendrocyte cell fate commitment (Bonferroni corrected $p < 2 \times 10^{-2}$), glial cell fate specification (Bonferroni corrected $p < 2 \times 10^{-2}$) and myelin assembly (Bonferroni corrected $p < 2 \times 10^{-2}$). Only the most significant GO annotations are reported here, after taking into account the nested structure of the GO categories [31]. Bonferroni correction was applied because of comparisons against all 16 modules. A full list of significant module GO annotations is found in Additional File 3.csv.

Proteome interactions and transcriptome co-expression

The HS-CC co-expression patterns were compared with the compiled protein-protein interactions (PPI) in the Human Protein Reference Database (HPRD) [32,33]. First, the network genes were cross-referenced with the list of HPRD gene products. Second, network genes with PPI interactions were selected, and the average topological overlap was computed. Comparing the average topological overlap of the PPI genes against an empirical distribution of random gene groups revealed that the PPI group had significantly higher topological overlap ($p < 10^{-5}$). These data confirm that co-expression patterns in the transcriptome are related to interactions in the proteome, in agreement with previous results [3,34].

Modules overlap with specific brain cell types

Module membership was compared against lists of genes associated with neuronal cell types [35]. Several modules (light cyan, yellow, pink and red) were enriched with neuronal cell markers (see Figure 4). The tan module was enriched with oligodendrocyte specific genes, which is concordant with its GO annotation for oligodendrocyte cell fate commitment. The magenta and yellow modules contained genes associated with astrocytes. Using an additional data set that identifies genes highly specific to subcategories of striatal neurons [36], we found that the red module contains several genes associated with striatopallidal neurons.

Spatial co-localization and transcriptome co-expression

Gene module membership was compared with the spatial distribution of the genes from the ABA [20]. Sets of co-localized genes were constructed beginning with the ten genes closest to the eigengene for each module; the

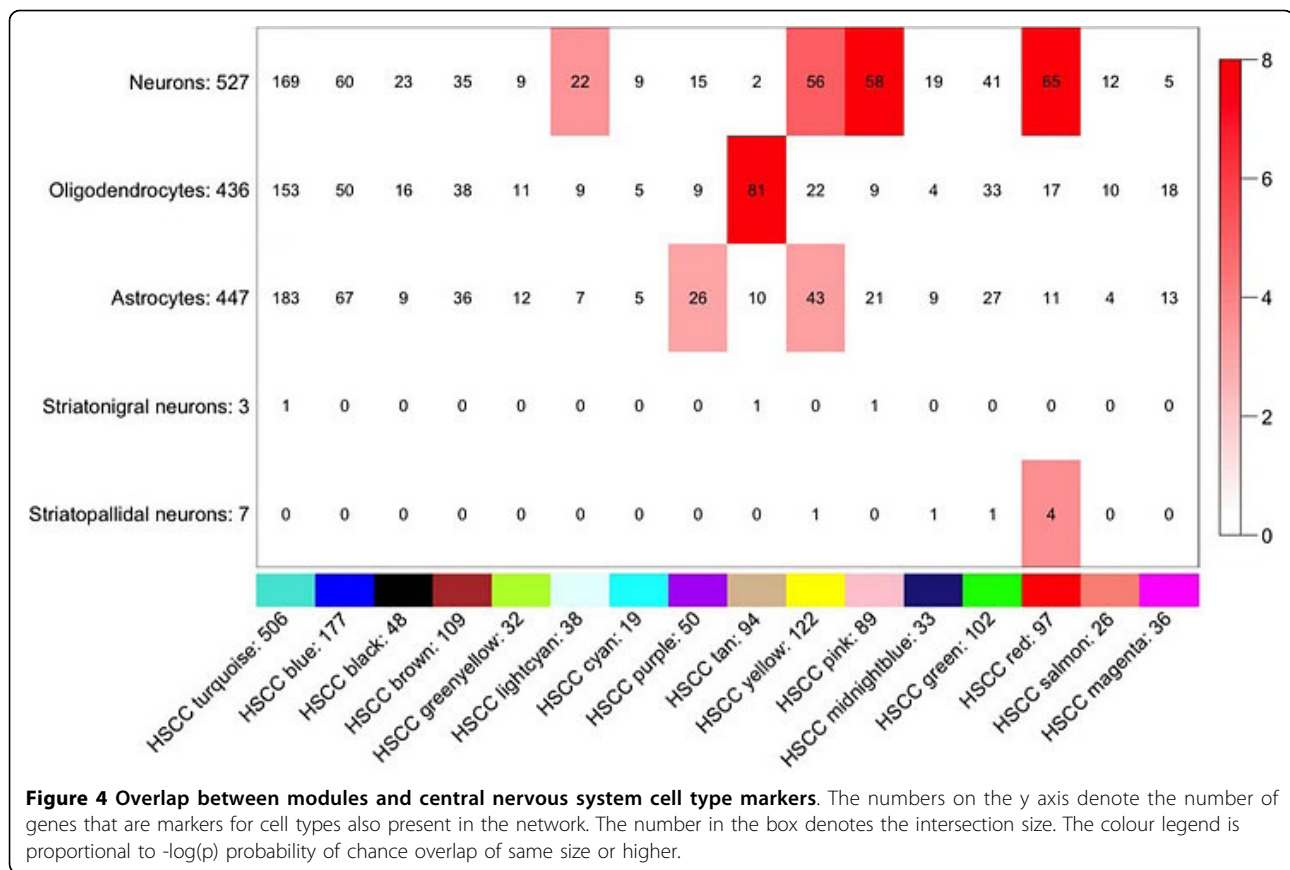
eigengene modelled the representative pattern of module expression [37]. Each gene in the module was then assigned a measure of module membership “kMe”, on the basis of its correlation with the eigengene. For each network module, the ten genes with highest kMe were selected. For each of these ten “seed” genes, the ABA was used to find the 250 genes with the most similar striatal spatial distribution. From this group, those present in the HS-CC network were denoted as the “co-localized” group. The Fisher exact test was used to assess the overlap between the spatially co-localized group and all members of a respective module, and Bonferroni correction was applied to correct for comparing each of the 16 modules. For eight of the modules, the overlap was significant, with Bonferroni corrected p-values ranging from 0.01 to 6.9×10^{-24} .

The extent of correspondence between co-expression and co-localization was further explored using the full set of pairwise interactions in the transcriptome with the set of pairwise spatial relationships captured in the ABA [20]. For a module, the transcriptome relationships were summarized by the topological overlap matrix. A similar size matrix for pairwise similarity in spatial profiles was constructed using the NeuroBlast algorithm [21]. Because only the top 250 most similar spatial profiles to a given gene are identified by NeuroBlast, the spatial similarity matrices were sparse. However, the Mantel test [28] still detected a moderately strong relationship between the co-expression and co-localization matrices for three of the modules: red ($r = 0.43$, $p < 2.0 \times 10^{-5}$), purple ($r = 0.27$, $p < 3.0 \times 10^{-3}$) and tan ($r = 0.40$, $p < 10^{-2}$).

Brain Explorer [38] was used to visually inspect the spatial properties of the co-localized module genes. For the ten co-localized genes closest (in correlation) to the module eigengene, the expression levels were superimposed and plotted over the extent of the striatum (see Figure 5). A few of the co-localized modules displayed distinctly localized patterns of spatial expression. The high expression of the midnight blue module (Figure 5B) appeared largely restricted to the nucleus accumbens, while the purple module (Figure 5C) displayed a very distinctive dorsal tier pattern of expression within the caudate putamen. A more typical pattern is that of the red module (Figure 5D) which appeared highly expressed through most but not all of the area of the striatum. The GO categories enriched in the midnight blue, purple and red modules are found in Additional File 3.

Transcriptional regulatory analysis of gene modules

Module-specific genes were examined for overrepresentation of transcription factor binding sites (TFBS). The strategy employed is detailed in Methods. Using a false

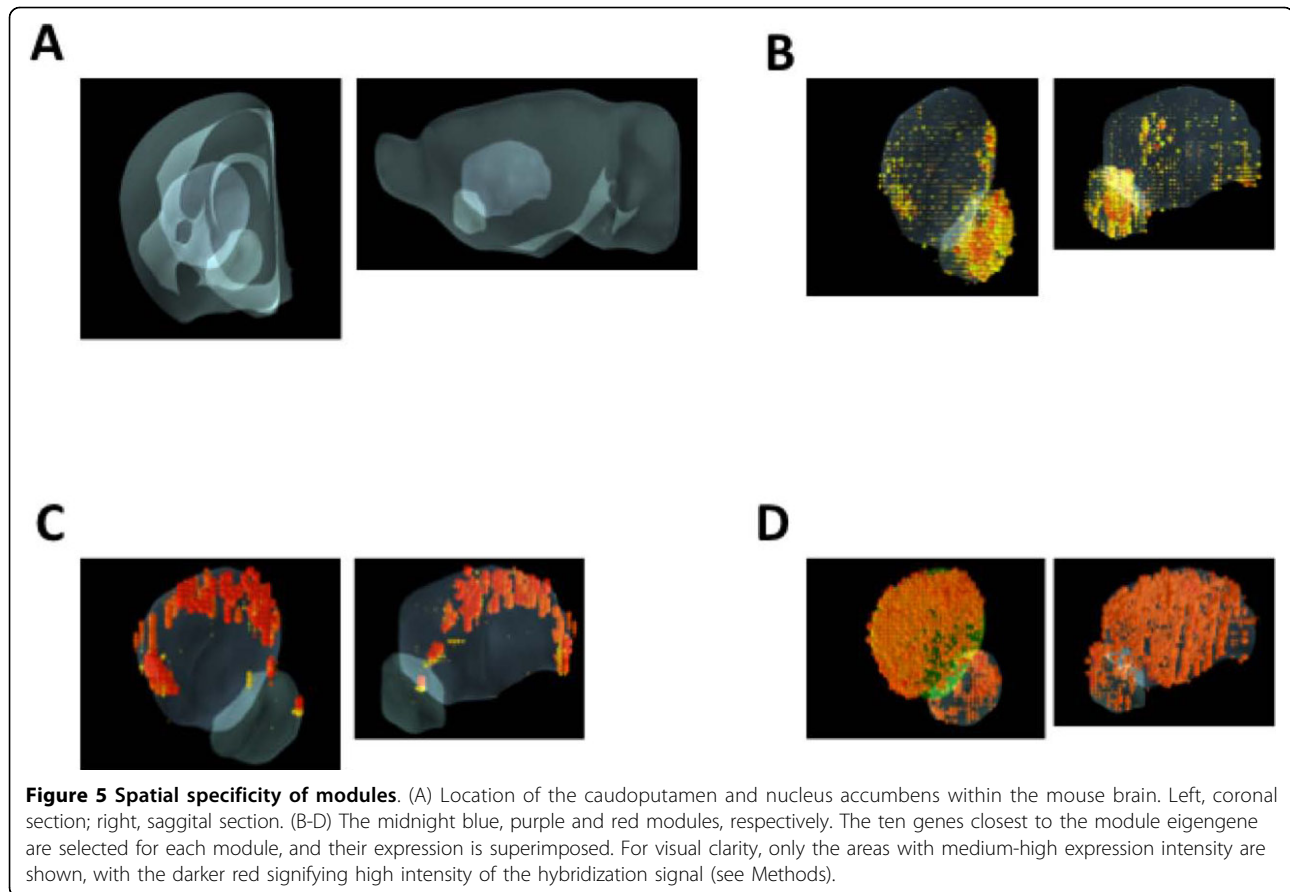


discovery rate threshold of 0.1, we identified 9 TFs preferentially affecting 5 gene modules (Table 1). The most highly enriched TF was Wilm’s tumour suppressor (Wt1) in the pink module ($p < 3 \times 10^{-5}$); this module is modestly enriched in GO categories associated with the regulation of transcription and neuronal development (see Additional File 3) and has also been associated in the literature with distinct neuropathological conditions such as Alzheimer’s disease [39]. The two modules (midnight blue and purple) that show distinct patterns of expression (see Figure 5) were not associated with TF enrichment. The blue and red modules were enriched in Specificity protein (Sp)-1, which is known to have a role in the regulation of striatal gene expression (e.g., [40]).

Discussion

Previous studies have reported preservation of gene co-expression modules across mouse strains [41] and even across species [14]. The level of preservation or divergence is usually quantified by the amount of overlap of gene modules from different networks. While this approach has been proven useful and we also employed it in the present study (see figures 2 and 3), it is highly dependent on the clustering procedure. We therefore

employed an additional, complementary approach of quantifying the level of preservation: the Mantel test of correlation between two matrices [28]. This method has been used extensively in quantifying relationships between genetic, geographic and environmental distances [42], and more recently has been adapted to quantification of differentially expressed genes [29]. If topological overlap between genes is preserved, this is detected as high correlation between the respective TOM matrices. Additionally, the Mantel test can be used for comparing any similar rank matrices, as we illustrate by quantifying the relationship between topological overlap and spatial co-localization, both of which can be represented as matrices of pairwise interactions. Overall, the data illustrate that, despite a > 6-fold difference in genetic diversity (HS-CC versus F_2), the overall module structure of the striatal networks was preserved. Intuitively, this congruence may seem obvious because the striatum performs a similar function in all three populations. However, there was a concern that the marked increase of genetic diversity in the HS-CC, as compared with the F_2 and HS4, would have such marked effects on gene expression variance that the overlap of the networks and their modules would be difficult to detect. While the topological overlap



matrices did suggest that there are some differences and that some modules agree significantly better than others, the overall structure remained intact.

The HS-CC data illustrate that relatively sophisticated module details can be detected with relatively modest sample sizes. Confirming the results of others [3], it was possible to detect modules that were enriched in genes associated with neurons (light cyan, yellow, pink and

red), oligodendrocytes (tan) or astrocytes (magenta and yellow). Only the yellow module showed an overlap. These data suggest that there are sufficient numbers of each cell type (and thus statistical power) to allow the clustering procedures to detect cell-type specific modules. A similar argument could be used to explain our ability (albeit somewhat limited) to detect unique spatial localizations for some modules. A majority of genes in our network were categorized in ABA as having uniform spatial distribution. However, the striatum is a complex structure with distinct subdivisions, some of which have been associated with specific behavioural states [43]. Even the most ubiquitous cell type within the striatum, the medium-spiny neuron, displays distinct morphological characteristics based on its spatial position, for instance in the core or shell of the nucleus accumbens [43]. Microarray samples are an amalgam of cell types from many distinct anatomical substructures. While gene expression studies have been instrumental in mapping behaviour into specific physiological processes, progress is hampered by the lack of more specific information about the cell types and anatomical substructures directly involved in patterns of gene co-expression. Our study leverages the vast amount of information available in

Table 1 List of transcription factors (TFs) affecting specific module genes at a threshold of false discovery rate (FDR) = 0.1 of enrichment compared with the rest of the network

Module	TF	Raw p-value/FDR	TFBS/genes in module
Pink	Wt1	3e-05/0.00543	89/151
Black	LRH1	0.001/0.0972	32/152
Black	Pax-6	0.00057/0.0972	73/152
Blue	ZF5	0.00001/0.0019	248/482
Blue	Sp1	0.00097/0.0614	182/482
Blue	HIC1	0.00064/0.0608	60/482
Red	Sp1	0.0004/0.0366	87/206
Red	CP2	0.00016/0.02928	97/206
Turquoise	CETS1p54	2e-05/0.0039	419/1315

mouse atlases such as ABA. This approach can be further enhanced by information emerging from studies using laser-captured neurons [44].

The detection of transcription factors (TFs) specific to distinct module genes provides a candidate mechanism for generating the co-expressed patterns of gene expression. We were unable to align the distinct patterns of expression in the midnight blue and purple modules with specific TFs. The purple module is of particular interest given the overexpression of the module genes in the nucleus accumbens and the role the accumbens has in a variety of behaviours including reward, reinforcement and drug abuse [43]. Understanding the factors associated with co-expression in this region has the potential to lead to new molecular-based treatments. The red module, which is associated with gene expression throughout the striatum (Figure 5D), is enriched in the Specificity protein 1 (Sp1) TF; the blue module also showed enrichment in Sp1. Sp1 is known to affect pathways associated with neuronal survival and death [45], and the dysregulation of SP1 has been associated with Alzheimer's disease [46]. The antibiotic mithramycin binds to G-C rich DNA sequences to inhibit the binding of SP1 [47]. Previous work [40] has shown that the administration of mithramycin blocks the striatal toxicity associated with chronic methamphetamine administration. It is of interest to speculate that this effect may be mediated through an influence on the genes within the red and blue modules.

Conclusions

We here present an integrative approach to the analysis of mouse brain transcriptome data. The modular structure of the striatum transcriptome is largely preserved despite large genetic differences among the HS-CC, F₂ and HS4 populations. Gene co-expression modules have spatial co-localization in some cases. A small set of TFs has a strong overabundance specific to distinct modules. These TFs have been previously associated with changes in behaviour or neuropathology, indicating that using a network-based comparison holds strong promise for the elucidation of underlying regulatory mechanisms. Finally, to our knowledge this is the first report on the application of gene network analyses to HS populations. HS populations have proven useful for the fine mapping of quantitative trait loci (QTL) and for the integration of QTL and gene expression data [9,48-53].

Methods

Animals

Breeding the HS-CC Mice

Males and females of the 8 parental strains (B6, CAST, NOD, 129, NZO, PWK, A and WSB) were obtained from The Jackson Laboratory. The strains were

randomly assigned a letter from A to H; the order of assignment was the order noted above. The goal of the breeding strategy described below was to create a small panel (32 families) of the HS-CC mice; for such a small panel, a completely balanced breeding design is not possible. At G₁, the following reciprocal F₁ hybrids were formed: A×B, B×A; C×D, D×C; E×F, F×E; G×H, H×G. At G₂, the following reciprocal 4-way crosses were formed: AB×CD, CD×AB; BA×DC, DC×BA; EF×GH, GH×EF; FE×HG, HG×FE. At G₃, 32 unique 8-way cross families were formed: ABCD × EFGH, ×GHEF, ×FEHG, ×HGFE.....HGFE × ABCD, ×CDAB, ×BADC, ×DCBA. Each family was bred in duplicate. Of the 64 matings, 61 had litters; the three matings without litters were CDAB × EFGH, EFGH × CDAB and CDAB × HGFE. Thus, all 32 of the planned families were formed. Beginning with G₄, the families were outbred using a circle breeding design—a male from family 1 was bred to a female from family 2 and so on. At G₆, the colony was expanded to 48 families by breeding a male from family 1 to a female from family 17 and so on. At G₁₂, one male and one female from each family were chosen for striatal gene expression analysis.

Breeding the HS4 Mice

Males and females of the 4 parental strains (B6, D2, C and LP) were obtained from The Jackson Laboratory. At G₁, the 12 possible reciprocal F₁ hybrids were formed, followed at G₂ by forming the 48 possible reciprocal 4-way crosses. The 4-way crosses were then outbred following a similar design to that noted for the HS-CC. At G₁₉, one male and one female from each family were randomly chosen for striatal gene expression analysis. Details of the sample preparation are found in [9]. Based on RNA quality, on maximizing family diversity and on gender neutrality, 64 samples were chosen for gene expression analysis. High-quality data were obtained for 54 samples.

Breeding the F₂ Mice

Male and female B6 and D2 mice were obtained from The Jackson Laboratory. The reciprocal F₁ hybrids were formed, followed by the formation of the 4 possible reciprocal F₂ hybrids. Eight males and females were randomly selected from each of the reciprocal crosses. From the 64 samples, high-quality expression data were obtained for 56 samples.

All animal care, breeding, and testing procedures were approved by the Laboratory Animal Users Committees at the Veterans Affairs Medical Center, Portland, OR 97239, and the Oregon Health & Science University, Portland, OR 97239.

Gene expression data processing

Gene expression data were obtained from the striatum using the Illumina WG 6.1 array exactly as described by

the manufacturer. Data were imported into the R application environment (<http://www.r-project.org>) using the lumi package [25]. Samples that were more than two standard deviations away from the mean inter-array correlation (IAC) [3] were not used in this study. This procedure was repeated three times resulting in stabilization of IAC and reduction of the data sets from 94 to 87 samples (HSCC), 60 to 56 samples in F₂ and 54 to 47 samples in the HS4.

Strip-level quantile normalization [54] was performed using a modified version of the procedure available in the lumi package (see Additional File 1, Figure S2). Next, data were culled for any probes that did not have an entrezID and also any probe that overlapped with known SNPs in any of the founding populations, using the publicly available Wellcome Trust Sanger Institute database of known polymorphisms (<http://www.sanger.ac.uk/resources/mouse/genomes/>). Further removed from analysis was any probe unlikely to be reliably detected [23,24], using the detectionCall procedure available in the lumi R package. Using a cutoff threshold of 0.01, all probes not expressed in at least a quarter of the samples were removed. Finally, to reduce the size of the data to a level suitable for subsequent network analysis and to reliably compute the correlation between probe levels, we eliminated probes with variability in the bottom 25% of any data set, as measured by the lumi function estimateLumiCV. This resulted in a set of 5600 probes common across the three data sets, which were subsequently used in the construction of the gene co-expression networks (see Figure 1B).

Construction of the gene co-expression networks

For each of the three data sets, we performed a series of steps for constructing a gene co-expression network, as outlined in [55], using the WGCNA software package available as an R package [11]. First, the absolute value of the Pearson correlation coefficient was computed for all pairs of genes in a data set. The Pearson correlation matrix was subsequently transformed into an adjacency matrix A using a power function. The connection strength a_{ij} between probes x_i and x_j then becomes $a_{ij} = |\text{corr}(x_i, x_j)|^\beta$; $\beta = 6$ was used based on the scale-free topology criterion [55].

Modules are groups of genes with high 'topological overlap' [55,56]. The topological overlap between two

genes i, j was computed as $\omega_{ij} = \frac{l_{ij} + a_{ij}}{\min\{k_i, k_j\} + 1 - a_{ij}}$,

where $l_{ij} = \sum_u a_{iu}a_{uj}$ represents the number of genes connected to both gene i and gene j , while u indexes all the genes in the network. Using the topological overlap

measure as opposed to the raw adjacency values minimizes the effects of spurious connection strengths between any two genes. The network modules were defined as branches of the clustering tree resulting from the dissimilarity matrix $d_{ij} = 1 - \omega_{ij}$. We used the "dynamic tree cut algorithm" [27], which takes advantage of the internal structure of the dendrogram in cutting the branches and identifying modules.

GO annotation of gene modules

Each module gene was tested for GO enrichment [30] using the GOstats R package [57]. Because of the nested structure of the GO terms, we employed the graph decorrelation procedure suggested by [31]. The resulting p-values were further adjusted using the Bonferroni procedure, which accounts for comparison against multiple modules [13].

Proteome interactions and transcriptome co-expression

The gene network co-expression patterns were compared with a manually compiled protein-protein interactions (PPI) database retrieved from the Human Protein Reference Database (HPRD) [32,33]. Using EntrezIDs, we selected the network genes also present in the list of HPRD gene products. The network genes with PPI interactions were selected and the average topological overlap was computed, as was the average topological overlap for gene groups of same size but randomly selected ($N = 10^5$). Statistical significance was assessed by counting the number of times random gene groups displayed higher topological overlap (in this case none).

Quantification of spatial co-localization

The ABA quantifies the local intensity of gene expression in an image by using individual cubes of $200 \mu\text{m}^3$ and computing for each the expression energy:

$$E(C) = \frac{\sum_{p \in C} M(p) \times I(p)}{|C|}, \text{ where } C \text{ is the set of pixels}$$

that intersect a cube, $M(p)$ is a binary mask with the value 1 for pixels intersecting a cube, and $I(p)$ is the greyscale value of the ISH image. The spatial correlation between two image series X, Y is then computed as the Pearson correlation coefficient:

$$cc(X, Y) = \frac{N \sum XY - \sum X \sum Y}{\sqrt{[N \sum X^2 - (\sum X)^2][N \sum Y^2 - (\sum Y)^2]}}, \text{ where the summation}$$

is over all N cubes in the domain.

The web interface of the ABA allows the retrieval of the 250 genes with highest spatial correlation to a gene of interest. We restricted the spatial extent of computing the spatial correlation to the striatum.

To find the most representative members of each module, the module eigengene, which is the first

principal component of the matrix representing all the expression patterns of module genes [37] was computed. The correlation between the expression pattern of each gene and the module eigengene results in a measure of the strength of module membership. For each module, the top 10 genes ranked in terms of eigengene-based module membership were selected; subsequently, ABA interface was used to retrieve the 250 genes most spatially correlated to these top 10 genes.

To perform the Mantel test for correlation between co-expression and co-localization, a square matrix was constructed with entries quantifying the strength of spatial correlation between the genes, with NA denoting unavailable information due to the ABA restricting the results to only the top 250 most similar genes. This square matrix was used in the Mantel test for correlation between co-localization and co-expression, using the R package “ncf” (<http://cran.r-project.org/web/packages/ncf>).

Detection of overrepresented TFBSs within the gene modules

For the detection of TFBSs within modules, the Promoter Analysis and Interaction Network Tool (PAINT) was used [58]; PAINT is a software tool available online (<http://www.dbi.tju.edu/dbi/tools/paint/index.php>), which connects with the TRANSFAC database [59]. Using the MATCH algorithm [60] and position weight matrix descriptions of binding sequences, the upstream region of each gene is searched for TFBSs. Our search focused on the 2000 base pairs upstream from putative start sites, used the “minimize false positives” setting and selected only the TFBSs that had a perfect match to the 5 base pair core sequence in the transcriptional regulatory element. Once the putative TFBSs were identified, PAINT was used to compare each module for overabundance of specific TFBS against the rest of the network, with statistical significance assessed using the Fisher exact test. The raw p-values were further adjusted due to multiple comparisons [61] using a false discovery rate approach [62].

Additional material

Additional file 1: This file contains additional figures detailing the data processing steps, including outlier sample removal and strip level normalization.

Additional file 2: This file contains all 5600 genes selected for the network analysis. The genes are identified by EntrezID, gene symbol as well as nuld, an unique identifier for Illumina probes [63]. The module color assignment for each of the three networks is provided for each gene.

Additional file 3: This file contains all the GO annotations for the 16 module genes detected in the HS-CC network.

Acknowledgements

This study was supported in part by United States Public Health Service grants AA10760, AA11034, AA13484, MH 51372, Oregon Clinical and Translational Research Institute [5UL1RR024140], Knight Cancer Institute [5 P30 CA069533-13], and grant support from the Department of Veterans Affairs.

Author details

¹Department of Behavioral Neuroscience, Oregon Health & Science University, Portland OR, USA. ²Research Service, Veterans Affairs Medical Center, Portland, OR 97239, USA. ³Division of Biostatistics, Public Health & Preventative Medicine, Oregon Health & Science University, Portland, OR 97239, USA. ⁴Division of Bioinformatics and Computational Biology, Medical Informatics & Clinical Epidemiology, Oregon Health & Science University, Portland, OR 97239, USA.

Authors' contributions

BM, DO and PD were responsible for sample preparation, collecting the gene expression data and the initial gene expression analyses. OI, PD, NW, JB and SM were responsible for most of the detailed analyses. OI was solely responsible for the alignment of the spatial and co-expression data and prepared all drafts of the manuscript. PD assisted in the image data retrieval from the Allen Brain Atlas web site. SM and RH edited the manuscript and provided overall oversight of the project. Dr. Kristin Demarest independently reviewed the manuscript prior to publication, and her contributions are gratefully acknowledged. Dr. Armand Bankhead provided help in the HPRD data retrieval. All authors have read and approved the final manuscript.

Received: 16 April 2010 Accepted: 19 October 2010

Published: 19 October 2010

References

1. Carlson MR, Zhang B, Fang Z, Mischel PS, Horvath S, Nelson SF: **Gene connectivity, function, and sequence conservation: predictions from modular yeast co-expression networks.** *BMC Genomics* 2006, **7**:40.
2. Fuller TF, Ghazalpour A, Aten JE, Drake TA, Lusis AJ, Horvath S: **Weighted gene coexpression network analysis strategies applied to mouse weight.** *Mamm Genome* 2007, **18**:463-472.
3. Oldham MC, Konopka G, Iwamoto K, Langfelder P, Kato T, Horvath S, Geschwind DH: **Functional organization of the transcriptome in human brain.** *Nat Neurosci* 2008, **11**:1271-1282.
4. Bergmann S, Ihmels J, Barkai N: **Similarities and differences in genome-wide expression data of six organisms.** *PLoS Biol* 2004, **2**:E9.
5. Liao BY, Zhang J: **Evolutionary conservation of expression profiles between human and mouse orthologous genes.** *Molecular Biology and Evolution* 2006, **23**:530-540.
6. van Noort V, Snel B, Huynen MA: **Predicting gene function by conserved co-expression.** *Trends Genet* 2003, **19**:238-242.
7. Oti M, van Reeuwijk J, Huynen MA, Brunner HG: **Conserved co-expression for candidate disease gene prioritization.** *BMC Bioinformatics* 2008, **9**:208.
8. Churchill GA, Airey DC, Allayee H, Angel JM, Attie AD, Beatty J, Beavis WD, Belknap JK, Bennett B, Berrettini W, et al: **The Collaborative Cross, a community resource for the genetic analysis of complex traits.** *Nat Genet* 2004, **36**:1133-1137.

9. Malmanger B, Lawler M, Coulombe S, Murray R, Cooper S, Polyakov Y, Belknap J, Hitzemann R: **Further studies on using multiple-cross mapping (MCM) to map quantitative trait loci.** *Mamm Genome* 2006, **17**:1193-1204.
10. Hitzemann R, McWeeney S, Belknap J: **Genetics, behavior and brain dopamine systems.** In *Neurobehavioral Genetics: Methods and Applications*. Edited by: Jones BC, Mormede P. CRC Press; 2006:371-388.
11. Langfelder P, Horvath S: **WGCNA: an R package for weighted correlation network analysis.** *BMC Bioinformatics* 2008, **9**:559.
12. Horvath S, Zhang B, Carlson M, Lu KV, Zhu S, Felciano RM, Laurance MF, Zhao W, Qi S, Chen Z, et al: **Analysis of oncogenic signaling networks in glioblastoma identifies ASPM as a molecular target.** *Proc Natl Acad Sci USA* 2006, **103**:17402-17407.
13. Ghazalpour A, Doss S, Zhang B, Wang S, Plaisier C, Castellanos R, Brozell A, Schadt EE, Drake TA, Lusis AJ, Horvath S: **Integrating genetic and network analysis to characterize genes related to mouse weight.** *PLoS Genet* 2006, **2**:e130.
14. Oldham MC, Horvath S, Geschwind DH: **Conservation and evolution of gene coexpression networks in human and chimpanzee brains.** *Proc Natl Acad Sci USA* 2006, **103**:17973-17978.
15. Keller MP, Choi Y, Wang P, Davis DB, Rabaglia ME, Oler AT, Stapleton DS, Argmann C, Schueler KL, Edwards S, et al: **A gene expression network model of type 2 diabetes links cell cycle regulation in islets with diabetes susceptibility.** *Genome Res* 2008, **18**:706-716.
16. Presson AP, Sobel EM, Papp JC, Suarez CJ, Whistler T, Rajeevan MS, Vernon SD, Horvath S: **Integrated weighted gene co-expression network analysis with an application to chronic fatigue syndrome.** *BMC Syst Biol* 2008, **2**:95.
17. Weston DJ, Gunter LE, Rogers A, Wulfschlegel SD: **Connecting genes, coexpression modules, and molecular signatures to environmental stress phenotypes in plants.** *BMC Syst Biol* 2008, **2**:16.
18. Saris CG, Horvath S, van Vught PW, van Es MA, Blauw HM, Fuller TF, Langfelder P, DeYoung J, Wokke JH, Veldink JH, et al: **Weighted gene co-expression network analysis of the peripheral blood from Amyotrophic Lateral Sclerosis patients.** *BMC Genomics* 2009, **10**:405.
19. Liu Z, Yan SF, Walker JR, Zwingman TA, Jiang T, Li J, Zhou Y: **Study of gene function based on spatial co-expression in a high-resolution mouse brain atlas.** *BMC Syst Biol* 2007, **1**:19.
20. Lein ES, Hawrylycz MJ, Ao N, Ayres M, Bensinger A, Bernard A, Boe AF, Boguski MS, Brockway KS, Byrnes EJ, et al: **Genome-wide atlas of gene expression in the adult mouse brain.** *Nature* 2007, **445**:168-176.
21. Ng L, Lau C, Young R, Pathak S, Kuan L, Sodt A, Sutram M, Lee CK, Dang C, Hawrylycz M: **NeuroBlast: a 3D spatial homology search tool for gene expression.** *BMC Neuroscience* 2007, **8**:P11.
22. Ng L, Bernard A, Lau C, Overly CC, Dong HW, Kuan C, Pathak S, Sunkin SM, Dang C, Bohland JW, et al: **An anatomic gene expression atlas of the adult mouse brain.** *Nat Neurosci* 2009, **12**:356-362.
23. McClintick JN, Edenberg HJ: **Effects of filtering by Present call on analysis of microarray experiments.** *BMC Bioinformatics* 2006, **7**:49.
24. Archer KJ, Reese SE: **Detection call algorithms for high-throughput gene expression microarray data.** *Brief Bioinform* 2010, **11**:244-252.
25. Du P, Kibbe WA, Lin SM: **lumi: a pipeline for processing Illumina microarray.** *Bioinformatics* 2008, **24**:1547-1548.
26. Yip AM, Horvath S: **Gene network interconnectedness and the generalized topological overlap measure.** *BMC Bioinformatics* 2007, **8**:22.
27. Langfelder P, Zhang B, Horvath S: **Defining clusters from a hierarchical cluster tree: the Dynamic Tree Cut package for R.** *Bioinformatics* 2008, **24**:719-720.
28. Mantel N: **The detection of disease clustering and a generalized regression approach.** *Cancer Res* 1967, **27**:209-220.
29. Shannon WD, Watson MA, Perry A, Rich K: **Mantel statistics to correlate gene expression levels from microarrays with clinical covariates.** *Genet Epidemiol* 2002, **23**:87-96.
30. Ashburner M, Ball CA, Blake JA, Botstein D, Butler H, Cherry JM, Davis AP, Dolinski K, Dwight SS, Eppig JT, et al: **Gene ontology: tool for the unification of biology.** The Gene Ontology Consortium. *Nat Genet* 2000, **25**:25-29.
31. Alexa A, Rahnenfuhrer J, Lengauer T: **Improved scoring of functional groups from gene expression data by decorrelating GO graph structure.** *Bioinformatics* 2006, **22**:1600-1607.
32. Peri S, Navarro JD, Amanchy R, Kristiansen TZ, Jonnalagadda CK, Surendranath V, Niranjan V, Muthusamy B, Gandhi TK, Gronborg M, et al: **Development of human protein reference database as an initial platform for approaching systems biology in humans.** *Genome Res* 2003, **13**:2363-2371.
33. Keshava Prasad TS, Goel R, Kandasamy K, Keerthikumar S, Kumar S, Mathivanan S, Telikicherla D, Raju R, Shafreen B, Venugopal A, et al: **Human Protein Reference Database-2009 update.** *Nucleic Acids Res* 2009, **37**:D767-772.
34. Ge H, Liu Z, Church GM, Vidal M: **Correlation between transcriptome and interactome mapping data from *Saccharomyces cerevisiae*.** *Nat Genet* 2001, **29**:482-486.
35. Cahoy JD, Emery B, Kaushal A, Foo LC, Zamanian JL, Christopherson KS, Xing Y, Lubischer JL, Krieg PA, Krupenko SA, et al: **A transcriptome database for astrocytes, neurons, and oligodendrocytes: a new resource for understanding brain development and function.** *J Neurosci* 2008, **28**:264-278.
36. Lobo MK, Karsten SL, Gray M, Geschwind DH, Yang XW: **FACS-array profiling of striatal projection neuron subtypes in juvenile and adult mouse brains.** *Nat Neurosci* 2006, **9**:443-452.
37. Horvath S, Dong J: **Geometric interpretation of gene coexpression network analysis.** *PLoS Comput Biol* 2008, **4**:e1000117.
38. Lau C, Ng L, Thompson C, Pathak S, Kuan L, Jones A, Hawrylycz M: **Exploration and visualization of gene expression with neuroanatomy in the adult mouse brain.** *BMC Bioinformatics* 2008, **9**:153.
39. Lovell MA, Xie C, Xiong S, Markesbery WR: **Wilms' tumor suppressor (WT1) is a mediator of neuronal degeneration associated with the pathogenesis of Alzheimer's disease.** *Brain Res* 2003, **983**:84-96.
40. Hagiwara H, Iyo M, Hashimoto K: **Mithramycin protects against dopaminergic neurotoxicity in the mouse brain after administration of methamphetamine.** *Brain Res* 2009, **1301**:189-196.
41. de Jong S, Fuller TF, Janson E, Strengman E, Horvath S, Kas MJ, Ophoff RA: **Gene expression profiling in C57BL/6J and A/J mouse inbred strains reveals gene networks specific for brain regions independent of genetic background.** *BMC Genomics* 2010, **11**:20.
42. Smouse PE, Long JC, Sokal RR: **Multiple regression and correlation extensions of the Mantel test of matrix correspondence.** *Syst Biol* 1986, **35**:627-632.
43. Meredith GE, Baldo BA, Andrezejewski ME, Kelley AE: **The structural basis for mapping behavior onto the ventral striatum and its subdivisions.** *Brain Struct Funct* 2008, **213**:17-27.
44. Luo L, Salunga RC, Guo H, Bittner A, Joy KC, Galindo JE, Xiao H, Rogers KE, Wan JS, Jackson MR, Erlander MG: **Gene expression profiles of laser-captured adjacent neuronal subtypes.** *Nat Med* 1999, **5**:117-122.
45. Chatterjee S, Zaman K, Ryu H, Conforto A, Ratan RR: **Sequence-selective DNA binding drugs mithramycin A and chromomycin A3 are potent inhibitors of neuronal apoptosis induced by oxidative stress and DNA damage in cortical neurons.** *Ann Neurol* 2001, **49**:345-354.
46. Citron BA, Dennis JS, Zeitlin RS, Echeverria V: **Transcription factor Sp1 dysregulation in Alzheimer's disease.** *J Neurosci Res* 2008, **86**:2499-2504.
47. Ray R, Snyder RC, Thomas S, Koller CA, Miller DM: **Mithramycin blocks protein binding and function of the SV40 early promoter.** *J Clin Invest* 1989, **83**:2003-2007.
48. Talbot CJ, Nicod A, Cherny SS, Fulker DW, Collins AC, Flint J: **High-resolution mapping of quantitative trait loci in outbred mice.** *Nat Genet* 1999, **21**:305-308.
49. Mott R, Talbot CJ, Turri MG, Collins AC, Flint J: **A method for fine mapping quantitative trait loci in outbred animal stocks.** *Proc Natl Acad Sci USA* 2000, **97**:12649-12654.
50. Demarest K, Koyner J, McCaughran J Jr, Cipp L, Hitzemann R: **Further characterization and high-resolution mapping of quantitative trait loci for ethanol-induced locomotor activity.** *Behav Genet* 2001, **31**:79-91.
51. Hitzemann R, Malmanger B, Reed C, Lawler M, Hitzemann B, Coulombe S, Buck K, Rademacher B, Walter N, Polyakov Y, et al: **A strategy for the integration of QTL, gene expression, and sequence analyses.** *Mamm Genome* 2003, **14**:733-747.
52. Valdar W, Solberg LC, Gauguier D, Burnett S, Klennerman P, Cookson WO, Taylor MS, Rawlins JN, Mott R, Flint J: **Genome-wide genetic association of complex traits in heterogeneous stock mice.** *Nat Genet* 2006, **38**:879-887.
53. Huang GJ, Shifman S, Valdar W, Johannesson M, Yalcin B, Taylor MS, Taylor JM, Mott R, Flint J: **High resolution mapping of expression QTLs in heterogeneous stock mice in multiple tissues.** *Genome Res* 2009, **19**:1133-1140.

54. Shi W, Banerjee A, Ritchie ME, Gerondakis S, Smyth GK: **Illumina WG-6 BeadChip strips should be normalized separately.** *BMC Bioinformatics* 2009, **10**:372.
55. Zhang B, Horvath S: **A general framework for weighted gene co-expression network analysis.** *Stat Appl Genet Mol Biol* 2005, **4**:Article17.
56. Ravasz E, Somera AL, Mongru DA, Oltvai ZN, Barabasi AL: **Hierarchical organization of modularity in metabolic networks.** *Science* 2002, **297**:1551-1555.
57. Falcon S, Gentleman R: **Using GOstats to test gene lists for GO term association.** *Bioinformatics* 2007, **23**:257-258.
58. Vadigepalli R, Chakravarthula P, Zak DE, Schwaber JS, Gonye GE: **PAINT: a promoter analysis and interaction network generation tool for gene regulatory network identification.** *OMICS* 2003, **7**:235-252.
59. Matys V, Fricke E, Geffers R, Gossling E, Haubrock M, Hehl R, Hornischer K, Karas D, Kel AE, Kel-Margoulis OV, *et al*: **TRANSFAC: transcriptional regulation, from patterns to profiles.** *Nucleic Acids Res* 2003, **31**:374-378.
60. Kel AE, Gossling E, Reuter I, Chermushkin E, Kel-Margoulis OV, Wingender E: **MATCH: A tool for searching transcription factor binding sites in DNA sequences.** *Nucleic Acids Res* 2003, **31**:3576-3579.
61. Gonye GE, Chakravarthula P, Schwaber JS, Vadigepalli R: **From promoter analysis to transcriptional regulatory network prediction using PAINT.** *Methods Mol Biol* 2007, **408**:49-68.
62. Benjamini Y, Hochberg Y: **Controlling the false discovery rate: a practical and powerful approach to multiple testing.** *Journal of the Royal Statistical Society Series B (Methodological)* 1995, **57**:289-300.
63. Du P, Kibbe WA, Lin SM: **nulD: a universal naming scheme of oligonucleotides for illumina, affymetrix, and other microarrays.** *Biol Direct* 2007, **2**:16.

doi:10.1186/1471-2164-11-585

Cite this article as: lanca *et al.*: Genetic diversity and striatal gene networks: focus on the heterogeneous stock-collaborative cross (HS-CC) mouse. *BMC Genomics* 2010 **11**:585.

**Submit your next manuscript to BioMed Central
and take full advantage of:**

- Convenient online submission
- Thorough peer review
- No space constraints or color figure charges
- Immediate publication on acceptance
- Inclusion in PubMed, CAS, Scopus and Google Scholar
- Research which is freely available for redistribution

Submit your manuscript at
www.biomedcentral.com/submit

